

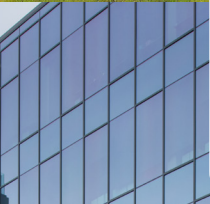


PRODUCT CATALOG

ARCHITECTURAL ELEMENTS, CLADDING & DECKING

Geolam®

Architectural Eco-Technology



MARS PETCARE HQ, TN



BLACKBAUD HQ, SC



Geolam products are light, easy to install and exceed the strength and durability of natural wood. Wood's warmth and aesthetic look is perfectly reproduced using our unique, sustainable, patented technology.

With over 500 installations across North America, Geolam products require very little maintenance, are fade resistant and can withstand extreme climates. They are ideal for façades, sunshades, rainscreens, other architectural accents, cladding, soffits and decking.

Architectural Elements

HYBRID ALUMINUM/WPC

Available in Teak, Moleskin, Rosewood and Ebony



	Dimensions	Weight	End caps		Connectors	
			Plastic	WPC	Straight	Corner
Soleo 6027 Minimum 1,000 lineal ft for all colors. Standard Length - 9 ft 10 in.		0.74 kg/lm 0.50 lb/ft	✓			
Soleo 6005 Minimum 1,600 lineal ft for all colors. Standard Length - 9 ft 10 in.		0.60 kg/lm 0.40 lb/ft				
Soleo 6008 Teak and Rosewood stocked in the US, no minimum. Minimum 1,000 lineal ft for Moleskin and Ebony. Standard Length - 9 ft 10 in.		0.77 kg/lm 0.52 lb/ft		✓	✓	✓
Soleo 6029 Minimum 1,000 lineal ft for all colors. Standard Length - 9 ft 10 in.		1.00 kg/lm 0.67 lb/ft		✓		
Soleo 6026 Minimum 1,000 lineal ft for all colors. Standard Length - 9 ft 10 in.		1.05 kg/lm 0.71 lb/ft	✓			
Soleo 6011 Minimum 1,600 lineal ft for all colors. Standard Length - 9 ft 10 in.		1.12 kg/lm 0.75 lb/ft				
Soleo 6030 Minimum 1,000 lineal ft for all colors. Standard Length - 9 ft 10 in.		1.20 kg/lm 0.81 lb/ft		✓	✓	✓
Soleo 6017 Minimum 1,000 lineal ft for all colors. Standard Length - 9 ft 10 in.		1.60 kg/lm 1.08 lb/ft	✓			
Soleo 6036 Minimum 1,600 lineal ft for all colors. Standard Length - 9 ft 10 in.		1.00 kg/lm 0.67 lb/ft				
Soleo 6009 Minimum 1,000 lineal ft for all colors. Standard Length - 9 ft 10 in.		1.40 kg/lm 0.94 lb/ft		✓	✓	✓

	Dimensions	Weight	End caps		Connectors	
			Plastic	WPC	Straight	Corner
Soleo 6034 Minimum 1,000 lineal ft for all colors. Standard Length - 9 ft 10 in.		1.94 kg/lm 1.30 lb/ft	✓			
Soleo 6031 <i>Teak and Rosewood stocked in the US, no minimum. Minimum 1,000 lineal ft for Moleskin and Ebony. Standard Length - 9 ft 10 in.</i>		1.60 kg/lm 1.08 lb/ft		✓	✓	
Soleo 6010 <i>Teak and Rosewood stocked in the US, no minimum. Minimum 1,000 lineal ft for Moleskin and Ebony. Standard Length - 9 ft 10 in.</i>		2.30 kg/lm 1.55 lb/ft		✓	✓	✓
Soleo 6038 Minimum 1,600 lineal ft for all colors. Standard Length - 9 ft 10 in.		2.00 kg/lm 1.34 lb/ft				
Soleo 6024 Minimum 1,600 lineal ft for all colors. Standard Length - 9 ft 10 in.		2.06 kg/lm 1.38 lb/ft				
Soleo 6040 Minimum 1,600 lineal ft for all colors. Standard Length - 9 ft 10 in.		2.40 kg/lm 1.61 lb/ft				
Soleo 6050 Minimum 1,600 lineal ft for all colors. Standard Length - 9 ft 10 in.		3.90 kg/lm 2.62 lb/ft				
Soleo 6033 <i>Teak and Rosewood stocked in the US, no minimum. Minimum 1,000 lineal ft for Moleskin and Ebony. Standard Length - 9 ft 10 in.</i>		3.30 kg/lm 2.22 lb/ft	✓		✓	
Planeo 4010 Minimum 1,600 lineal ft for all colors. Standard Length - 9 ft 10 in.		2.21 kg/lm 1.49 lb/ft				
Planeo 4044 Minimum 1,600 lineal ft for all colors. Standard Length - 9 ft 10 in.		4.52 kg/lm 3.04 lb/ft				
Planeo 4123 Minimum 1,600 lineal ft for all colors. Standard Length - 9 ft 10 in.		3.74 kg/lm 2.51 lb/ft				
Planeo 4048 Minimum 1,600 lineal ft for all colors. Standard Length - 9 ft 10 in.		4.80 kg/lm 3.23 lb/ft				

	Dimensions	Weight	End caps		Connectors	
			Plastic	WPC	Straight	Corner
Planeo 4061 Minimum 1,600 lineal ft for all colors. Standard Length - 9 ft 10 in.		9.50 kg/lm 6.38 lb/ft				
Planeo 4046 Minimum 1,600 lineal ft for all colors. Standard Length - 9 ft 10 in.		9.90 kg/lm 6.65 lb/ft				
Planeo 4062 Minimum 1,600 lineal ft for all colors. Standard Length - 9 ft 10 in.		14.25 kg/lm 9.58 lb/ft				
Diameo 2018 Minimum 1,600 lineal ft for all colors. Standard Length - 9 ft 10 in.		1.42 kg/lm 0.95 lb/ft	✓		✓	
Diameo 2023 Minimum 1,600 lineal ft for all colors. Standard Length - 9 ft 10 in.		7.43 kg/lm 4.99 lb/ft				
Rondo 3002 Minimum 1,600 lineal ft for all colors. Standard Length - 9 ft 10 in.		0.95 kg/lm 0.64 lb/ft				
Rondo 3003 Minimum 1,600 lineal ft for all colors. Standard Length - 9 ft 10 in.		1.14 kg/lm 0.77 lb/ft				
Rondo 3004 Minimum 1,600 lineal ft for all colors. Standard Length - 9 ft 10 in.		2.47 kg/lm 1.66 lb/ft				
Rondo 3006 Minimum 1,600 lineal ft for all colors. Standard Length - 9 ft 10 in.		1.72 kg/lm 1.16 lb/ft				

	Dimensions	Weight	End caps		Connectors	
			Plastic	WPC	Straight	Corner
Careo 7015 <i>Minimum 1,000 lineal ft. for all colors. Standard Length - 9 ft 10 in.</i>		0.82 kg/lm 0.55 lb/ft				
Careo 7031 <i>Minimum 1,600 lineal ft. for all colors. Standard Length - 9 ft 10 in.</i>		0.82 kg/lm 0.55 lb/ft				
Careo 7011 <i>Minimum 1,000 lineal ft. for all colors. Standard Length - 9 ft 10 in.</i>		1.34 kg/lm 0.90 lb/ft				✓
Careo 7035 <i>Minimum 1,000 lineal ft. for all colors. Standard Length - 9 ft 10 in.</i>		2.28 kg/lm 1.53 lb/ft				
Careo 7014 <i>Minimum 1,000 lineal ft. for all colors. Standard Length - 9 ft 10 in.</i>		2.80 kg/lm 1.88 lb/ft				✓
Careo 7016 <i>Minimum 1,600 lineal ft. for all colors. Standard Length - 9 ft 10 in.</i>		4.00 kg/lm 2.69 lb/ft				

End Caps

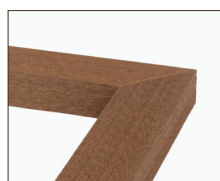
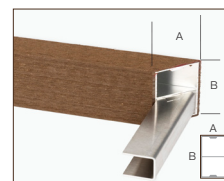
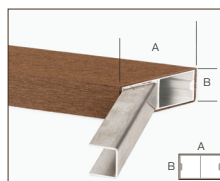


Non standard End Caps & Splicers/Connectors available on request.

Splicers/Connectors

Corners

Française (Lying Down) Belge (Standing Up)



Straight

Note: bumps to prevent sliding during installation



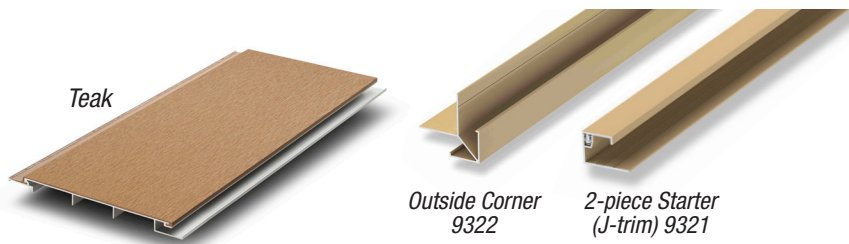
Warehoused in the USA

Standard lengths = 3 meters (9' 10"). Max length available = 6 m (19' 8") and for Planeo = 8 m (26"). Minimum order for non-standard lengths = 500 m (1640')

Cladding & Soffit

HYBRID ALUMINUM/WPC

Available in Teak, Moleskin, Rosewood and Ebony



		Dimensions	Weight
Vertigo 5011	Minimum 5000 lineal ft or 1800 sq ft for all colors. Standard Length - 12 ft.		0.77 kg/lm 0.52 lb/ft
Vertigo 5010	Minimum 5000 lineal ft or 2500 sq ft for all colors. Standard Length - 12 ft.		1.19 kg/lm 0.80 lb/ft
Vertigo 5010	All colors stocked in the US, no minimum. Standard Length - 12 ft.		1.19 kg/lm 0.80 lb/ft

Commercial Decking

CO-EXTRUDED WOOD PLASTIC COMPOSITE

Available in Teak, Moleskin, Rosewood and Ebony



		Dimensions	Weight	Clips and screws	End caps and screws
Qualita 020C	All colors stocked in the US, no minimum. Standard Length - 12 ft.		3.30 kg/lm 2.21 lb/ft	✓	✓
Qualita 020E	All colors stocked in the US, no minimum. Standard Length - 12 ft.		3.30 kg/lm 2.21 lb/ft		✓

Warehoused in the USA

Standard lengths = 3 meters (9' 10"). Max length available = 6 m (19' 8") and for Planeo = 8 m (26"). Minimum order for non-standard lengths = 500 m (1640')

Standard colors *Custom colors available upon request. (Minimum order quantities required.)*



To learn more about the advantages of Geolam, our complete product line, or for any other information, please visit our website or contact us at any time.

www.geolaminc.com

1-877-627-3530 • info@geolaminc.com

Geolam®

Architectural Eco-Technology